

# A Year in Depth

## *The Annual Report of*

Hampshire and Wight Trust for Maritime Archaeology



Hampshire & Wight Trust

for

MARITIME

Archaeology

2005/2006

### President

Mrs Mary Fagan, JP HM Lord Lieutenant of Hampshire

### Vice Presidents

Earl of Selborne, KBE FRS

Mr CDJ Bland, JP HM Lord Lieutenant of the Isle of Wight  
The Lord Montagu of Beaulieu

### Patrons

Lord Mottistone, CBE

The Rt Hon Earl Jellicoe, KBE DSO MC FRS PC

Mr MP Aiken

Mr A Williams, OBE

Mr A Titchmarsh, MBE VMH, DL

Mr M Jay, CBE DL

The Hon R Montagu

Mr N de Rothschild, MA

### Chairman

Mr Maldwin Drummond, OBE JP DL Hon DSc

### Vice Chairman

Mr DA Keep, Hampshire County Council

### Management Committee

Cllr M Jarman, Isle of Wight Council

Mr DEJ Guy, MBE JP DL

Cllr L Mason, Portsmouth City Council

Mrs V Fenwick

Mr G Cadman

Dr J Adams

Mr JM Bingeman

Dr N Flemming

### Officers

Mr G Momber, Director

Ms J Satchell, Archaeological Officer

Mrs A Bushell, Administrator (until March 2006)

Mrs S Goulding, Administrator (from April 2006)

Mr J Pittam County Treasurer

Mr J Lawson, Head of Legal and Democratic Services

Mrs L Tartaglia-Kershaw, Head of Landscape, Planning and Heritage

Mr D Hopkins, Senior Archaeologist, Hampshire County Council

Ms Ruth Waller, County Archaeological Officer, Isle of Wight

### Project Officers

Miss R Causer

Mr J Jansen van Rensburg

Miss A Hamer

Ms J Gillespie

Miss C Campbell (until January 2006)

Miss N Pee (from April 2006)

### Underwater Archaeology Centre Staff

Mr M Player (from March 2006)

Mrs R Shirlaw (from March 2006)

Mrs M Ashton (from March 2006)

## Contents



Foreword	2
HWTMA's Policy Statement	3
Schools Dive into Archaeology	4
Maritime Archaeology and Marine Aggregates: Education for All	6
Education Outside the Classroom	7
Underwater Archaeology Centre	8
Hurst Castle Shipwrecks and Seashells Extravaganza	9
Submerged Landscapes: Climate Change and Cultural Identity	10
A Year in Pictures	12
Eastern SolMAP	14
Hamble River Project	15
Forton Lake Archaeology Project	16
Warship <i>Hazardous</i>	17
Inspecting Shipwrecks	17
Dive onto <i>Victory</i>	18
Friends of HWTMA	19
Archaeology Extra	20
Professor Archie O'Logy and Dive into History	21
Spreading the Word	22
Grants, Donations and Assistance in Kind	24

All text and images in this report are by HWTMA staff unless otherwise stated.



After one and a half decades the Hampshire and Wight Trust for Maritime Archaeology is continuing to contribute to our understanding of the region's cultural heritage. 2005/2006 has witnessed the discovery of new sites which range from submerged Stone Age settlements to shipwrecks lost within the last hundred years. As we learn more we have been keen to disseminate information widely and to this end we have invested time in exhibitions, displays and education.

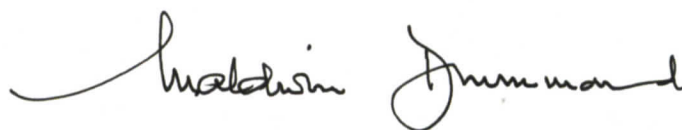
Our fifteenth year of presenting activities and seminars has been the busiest yet with a programme reaching out to members of the public, community groups and schools. 77 presentations have been given, 16 reports, books and papers have been published, 23 activity days have been organised, over 1500 education packs have been requested by schools around the country and our web site has attracted over 250,000 'hits'.

The education packs we have been developing during the last couple of years are now being used on a regular basis. Activity sessions have been taught in primary and secondary schools, particularly benefiting children with disadvantaged backgrounds and children with learning disabilities. This is an initiative that has been very well received and one which we aim to develop within our education strategy in the years ahead.

For those who are not still at school, the Trust has created temporary displays at venues around Hampshire and the Isle of Wight. Eastleigh Museum, Forton Lake, Southsea Castle, Hurst Castle, Fort Cumberland, Southampton Boat Show, the Needles Battery and Brading Roman Villa to name but a few. Our permanent exhibition at Fort Victoria on the Isle of Wight has also seen improvements. It has been redesigned to host new interactive displays in refurbished display rooms and has been renamed the Underwater Archaeology Centre to better reflect its aspirations.

During an active season of fieldwork artefacts and discarded personal apparel have been recovered from below the old mooring of HMS *Victory*, whereas inspections of whole shipwrecks continue in the eastern Solent. In the western Solent, occupants of a landscape now drowned have been giving up their 8,000 year old secrets and allowing access to their long forgotten world. Above water, investigation around the harbours and rivers of the Hamble, Itchen, Medina, Langstone and Chichester is bringing to light finds which are being recorded before they are lost. All these projects have been conducted by professional archaeologists working closely with volunteers and members of the local community.

The Trust welcomes its new staff and project officers, Nicola Pee, Sue Goulding, Michael Player, Mary Ashton and Rosemary Shirlaw, and I take this opportunity to thank them along with existing staff for their hard work in making the Trust such a success. I would also like to thank Hampshire County Council, the Isle of Wight Council, English Heritage, Southampton City Council, Leader +, the Local Heritage Initiative and the Crown Estate, along with those other authorities, companies, organisations, Trusts and individuals who are listed in this report for their sponsorship and support over the past twelve months.

A handwritten signature in black ink, appearing to read 'Maldwin Drummond'.

**MALDWIN DRUMMOND**

Chairman

October 2006



## Aim

The Hampshire and Wight Trust for Maritime Archaeology will promote interest, research and knowledge of maritime archaeology and heritage in Great Britain with core activities concentrated in the counties of Hampshire and the Isle of Wight and the adjacent South Coast areas.

## Objectives

HWTMA will:

- ♦ Promote maritime archaeological study in accordance with professional and museum codes of conduct and practice.
- ♦ Promote the in situ preservation and management of important archaeological sites in its area of interest.
- ♦ Support local, regional and national initiatives for improvements to the legislation regarding the preservation and management of the maritime archaeological heritage.
- ♦ Promote public awareness, enjoyment and participation in the maritime archaeological heritage.
- ♦ Provide a maritime archaeological service to Hampshire County Council, the Isle of Wight Council, Southampton City Council, Portsmouth City Council and other Local Authorities.
- ♦ Ensure that the maritime archaeology plays an important role in coastal planning, management and policies in the Solent and Wight areas.
- ♦ Carry out maritime archaeological surveys and investigations for incorporation into environmental assessments and similar studies.
- ♦ Compile and maintain a database, and base chart, of all known maritime archaeological sites in the Solent and Wight areas and exchange information with local SMR holders and the National Archaeological Record (Maritime Sites).
- ♦ Promote archaeological awareness and competence amongst divers.
- ♦ Support, and where possible, assist in the publication of the results of maritime archaeological investigations, surveys and research undertaken in the Solent, Wight and adjacent South Coast areas.
- ♦ Liaise with other local, regional and national organisations involved in maritime archaeology and related disciplines.

## Schools Dive into Archaeology

This year HWTMA staff have actively taken their exciting education programme out to schools for the first time and the results and feedback have been very positive. The Secrets of the Solent Education Pack has been used in numerous schools throughout the region and further afield and the launch of the Aggregate to Outreach Education Resource Pack has been met with great reviews. Over 1500 education packs have been sent out to schools or downloaded from the website over the last year.



*A Da Vinci pupil tries SCUBA diving for the first time*

The success of HWTMA's educational initiatives makes us a leader in maritime archaeology education. This has been reflected in growing requests from schools for us to take our programme and staff into the classroom. Workshops, activities and assemblies have taken part at Hounslow School in Totton, Hampshire, East Cowes Primary School and the Isle of Wight College on the Isle of Wight and Da Vinci Community College, Derby. It is hoped this aspect of the Trust's work will expand in future years and become a vital resource that is available to all schools who seek a new inspirational and motivating educational experience for their pupils.

### Da Vinci . . . Far from the Sea!

Da Vinci Community School in Derby commissioned the Trust to run a week of maritime archaeology workshops. This gave HWTMA an opportunity to

run its full suite of courses and workshops, examples of which are described below.

The college is a 500 student 11-16 secondary school. Da Vinci is located in an area of significant social deprivation and has a high percentage of students on free school meals and with special educational needs. The school strives to create opportunities for students, widening their experiences and enhancing their aspirations. Through the provision of opportunities that would not normally be available to students, they become inspired and have a heightened sense of motivation. Derby is quite a distance from the sea and many pupils have rarely had the chance to visit the seaside. It was hoped the week would be something new and exciting for the pupils involved.

The Trust has been used to providing workshops through the Underwater Archaeology Centre and working with Hampshire and Isle of Wight schools who regularly interact with the sea due to their proximity with the coast. However in Derby it was a completely new encounter for the pupils and HWTMA staff. The week was seen as a great opportunity to enable students to try a series of activities that they would never have dreamt of doing before. The demand for places was phenomenal with students relishing the chance to engage in learning through new experience whilst having tremendous fun.



*Pupils examine a cannon ball from HMS Impregnable*



### Classroom Workshops

Pupils started off exploring the world of maritime archaeology in the classroom. Subjects such as 'What is Maritime Archaeology?' 'Shipwrecks and Conservation' and 'Equipment and Skills' were examined through hands-on practical sessions. These sessions were complemented by the use of the new Aggregate to Outreach Education Resource Pack and the accompanying artefacts.

### Off to the Pool!

Then there was a chance for the pupils to try something new – SCUBA diving!! This was made possible through the help and support of local PADI instructors from Go-Dive who provided their services and equipment free of charge. Virgin Active were also involved and allowed the SCUBA diving to take place for free in their pool. This presented an unforeseen challenge for HWTMA - on arrival at the pool it became apparent many pupils could not swim, a fact they had forgotten to mention! However thanks to the patience and perseverance of everyone involved all the pupils had a go and many were even able to swim a short distance unaided by the end of the session.



*Pupils receive instruction in the basic principles of diving and underwater archaeology*

### Ancient Skills in Action

A final objective was to expose pupils to ancient technologies. They were taken to the new Derventio Heritage Village where they were given a chance to

look round the site and try their hand at some ancient technology skills such as thatching and wattle and daub. This was a great opportunity to see how archaeological work could be applied to the study of ancient technology. The session brought to life the lives of our ancestors through a fun hands-on way and really did make the children think about what they had learnt in the classroom sessions.



*A Da Vinci pupil helps construct a roundhouse using wattle and daub*

### A Success!

The week was a tremendous success, over fifty pupils took part and most of them now hope to go on and learn to SCUBA dive and participate on archaeological projects. Martyn Cooper, Vice Principal, described the week as 'breathtakingly brilliant' and the workshops as having, 'significantly touched the lives of nearly 50 students and given them an experience they will never forget and memories they will always cherish'.





*An enthralled audience listen to the presentation by Rebecca Causer at Hurst Castle*

Over the last year, our new free educational resource has been launched and is now in use across the country. 'Exploring the Seabed of the Solent and Wight: maritime archaeology and marine aggregate' has been split into two main areas. The educational handling resource has been developed for use in schools, museums and out of school clubs. Running in tandem with the resource packs for children, a presentation has been created that is broadly aimed at adult community groups, although a particularly enjoyable presentation was carried out at Hurst castle at which the audience was a mixture of children and adults.

## Education Pack

The education pack contains all necessary information and activities to give pupils access to the exciting worlds of maritime archaeology and the aggregate industry, but it is the accompanying artefacts that make this resource particularly exciting. Artefacts, including ancient hand axes, pottery, nit combs, clay pipes and much more are available for pupils to observe and handle. The multidisciplinary nature of archaeology provides cross-curricular study opportunities and is designed to be used with Key Stages 2 and 3. Many of the activities encourage the use of observational, interpretive, and reporting skills.

## Bringing the Underwater World to Life

Both the presentation and the teaching resource bring to life the fascinating world of underwater heritage. Not only is the Solent and Wight area particularly rich in archaeology it also has important marine aggregate resources. These resources enable us to learn about the human past while appreciating modern demands on the marine environment.

Both the loans pack and the presentations have been highly successful, 38 presentations have been either given or booked and packs have been used in 11 different schools with more on order. The education pack notes have been downloaded by over 150 schools. The production and distribution of the pack has been made possible due to generous funding from Defra's Aggregates Levy Sustainability Fund, distributed by English Heritage.



*The education pack and loans box*



## Figurehead Fun!

Alison, Rebecca and Professor Archie O'Logy were asked to hold figurehead making workshops at the Isle of Wight College for a class of adults with learning disabilities. During the first session the class were taught about figureheads before embarking on research into their design and producing mini clay prototypes. During following visits, much fun was had with large paper mache and mod-roc figureheads. The students proved to be very talented and made us proud by producing some fantastic sculptures.



*IOW College students proudly display their figureheads*

The project culminated in an exhibition at the Quay Arts Centre on the Isle of Wight. The opening was a huge success, which led to the figureheads going on tour! They are currently on display at our own Underwater Archaeology Centre at Fort Victoria, and are soon to enjoy even more prestige at the National Oceanography Centre in Southampton.

## Activity Days

Building on the success of summer activity days at the Underwater Archaeology Centre in 2005 six children's activity days were held in the summer holidays during 2006. They were designed to appeal to both local families and tourists and to engage children with their maritime heritage. A diverse range of activities were on offer including a bones identification day, maritime mosaics and a pirate fun day. This years activity days saw a record number of visitors with many children coming back every week to experience a new archaeological delight!

## Displays and Activities at Eastleigh Museum

Two family activity days were run for Eastleigh Museum during the summer. This coincided with a display of the Trust's work. The two sessions focused on ships figureheads and pirates. Over 200 children and their families attended the two events which were deemed to be another great success.



*Prof. Archie O'Logy with Eastleigh Carnival Queens*

## East Cowes Primary School

Janet Gardner at East Cowes Primary met HWTMA staff at an Education Outside the Classroom event on the Isle of Wight earlier this year. She invited staff to lead a number of sessions which encompassed all pupils. The sessions took place on a local beach and encouraged students to think about all the maritime heritage that surrounds them and get them excited! The response from the children was extremely positive and HWTMA staff members were delighted to be involved.



*Pupils examine artefacts found on the beach*



## A New Name and a Face Lift For 2006!

The Underwater Archaeology Centre had a new lease of life injected during the winter. A name change spurred on an extensive refit and revamp of both the exhibition and shop area. This was achieved thanks to the hard work of HWTMA volunteers and the transformation was breathtaking.

## A Cold Week in November . . .

First to be tackled was the shop area. HWTMA were able to secure new shop units at a vastly reduced price thanks to Opto International. An office area was created and the shop replanned to give maximum sales space and access. This was a great start and provided a welcoming entrance to the Underwater Archaeology Centre.

## . . . Another Cold Week in February!

February saw a team working around the clock painting and reordering the exhibition. A criticism in the past was an apparent lack of things to interest children and the refit sought to address this. A new children's soft play corner was created to keep younger visitors entertained whilst their parents explore the Centre. Professor Archie O'Logy introduced the new Porthole Trail which aims to get children interacting with the displays. Two new interactive exhibits were installed having been designed and made by the team at Intech Science Centre. A Dive onto *Victory* display was installed along with artefacts found during the project.



*Young visitors to the Underwater Archaeology Centre enjoy the new children's play area*

## The Official Opening



*The Lord Lieutenant of the IOW Christopher Bland, The Mayor of Yarmouth HWTMA Director*

On Saturday 15h July the HWTMA were honoured to have the Underwater Archaeology Centre officially opened by Christopher Bland, Lord Lieutenant of the Isle of Wight, with special guests. It was a day for celebration and guests viewed the Underwater Archaeology Centre to the sounds of the Wareham Whalers singing traditional sea shanties and then enjoyed a fantastic buffet lunch.

## Family Fun Day

In addition to the official side of events a family fun day for the public was held. This was a great day promoting maritime archaeology and many families turned up to sample the hands on archaeological activities offered. International figurehead maker Norman Gaches enthralled visitors with his beautiful carved figureheads. The Young Archaeology Club Isle of Wight branch allowed people to taste their Neolithic cooking and try their hand at Roman Flag Signaling. The Medina Valley Eco-Challenger Van attended the event to add an ecological aspect.

## Feedback

The feedback from the refit has been tremendous with numerous fantastic comments in the visitors book. School bookings have also risen this year with over five times the number of schools visiting compared to last season.



# Hurst Castle Shipwrecks and Seashells Extravaganza



*Hands-on archaeological activities*

The Friends of HWTMA were delighted to receive Awards for All funding to run a themed Shipwrecks and Seashells weekend at Hurst Castle in conjunction with the Hampshire and Isle of Wight Wildlife Trust. The outreach event was our largest in Hampshire to date and was also the Wildlife Trust's flagship event of South East Marine Week. It was extremely successful drawing in many visitors despite the windy weather.

## An Area Rich in Maritime Heritage

Hurst Castle is the perfect place to view the Solent and its rich maritime heritage with shipwrecks and treasures from all ages. Within view from the castle ramparts are the Needles and Alum Bay sites. During the long history of the Solent thousands of vessels that navigated these waters have faced many hazards. Archaeological work on the wrecks that resulted tell the story of the catastrophic losses. The Shipwrecks and Seashells weekend aimed to lift the lid on the secrets of the underwater world.

## Fun for All The Family!

There were numerous activities available for all ages to try. We were delighted to secure an opportunity for 'Try Diving' free of charge for any daring visitors. This was very popular and gave people a chance to try something different on their day out. The 'Maritime Archaeologist for a Day' challenge gave families the chance to try a series of hands-on archaeological activities including

excavation, planning frame drawing and working in a low visibility environment. A series of talks were held for people to find out more about the submerged archaeology of the area and the work of HWTMA.

A real favourite was ancient technology specialist Will Lord who amazed visitors with his flint knapping skills and allowed people to get involved and have a go. One participant even sat for a whole day patiently making a bone needle. Face painting, badge making and a series of craft activities were available for visitors which helped make the event a great family day out. Hampshire and Isle of Wight Wildlife Trust further complemented the experience by offering a series of activities highlighting the diverse marine wildlife of the region. The 'High Tech Wild Trek' trailer came along to allow children to examine plankton samples. Another crowd puller was the Wildlife Roadshow which featured a life size baby whale shark!



*Ancient technology specialist Will Lord enthralled visitors*

## Thank You!

We would like to take this opportunity to thank the team of enthusiastic volunteers who came along and helped make the weekend a huge success. Hopefully the event will have inspired the next generation of maritime archaeologists in Hampshire and have raised the profile of submerged archaeology for all. A series of display boards produced especially for the event have been erected permanently in Hurst Castle.



13,000 years ago, the sea level was much lower than today and large tracts of habitable land covered the continental shelves. As the last Ice Age came to a close and the climate warmed, the water level rose steadily inundating all before it. This impacted a population who, about 5,500 years BC found themselves cut off from Europe. The culture that developed during this rapid environmental change adapted and thrived to establish themselves as the first Britons. Little is known of the way of life of these people, however, traces of this enigmatic society which had become integrated into the seabed, are now accessible again as they are exposed by erosion.



*HWTMA patron Andy Williams surveys the submerged landscape*

### Archaeology and Coastal Change

The discovery of a submerged occupation site by the HWTMA, in a drowned forest 11m below the Solent, hinted at the potential of the seabed to preserve archaeological and palaeo-environmental material. Excavation and analysis with support by English Heritage has revealed sediments containing hundreds of burnt and worked flints. These deposits are dateable and as such are valuable indicators of sea level fluctuations. When the relationship between the land and sea is established the data can be used to help interpret the geomorphological evolution of our most vulnerable stretches of shoreline.

The value of this information to coastal management has been recognised by the Standing Conference on Problems Associated with the

Coastline (SCOPAC) who commissioned the Trust to compile a report titled 'Archaeology and Coastal Change'. The report, completed in the summer, reviewed the shifting boundaries of the sea, identifying where the archaeological and palaeo-environmental resources could inform coastal managers of the long-term behavioural trends in coastal change.

### A Submerged Mesolithic Living Space

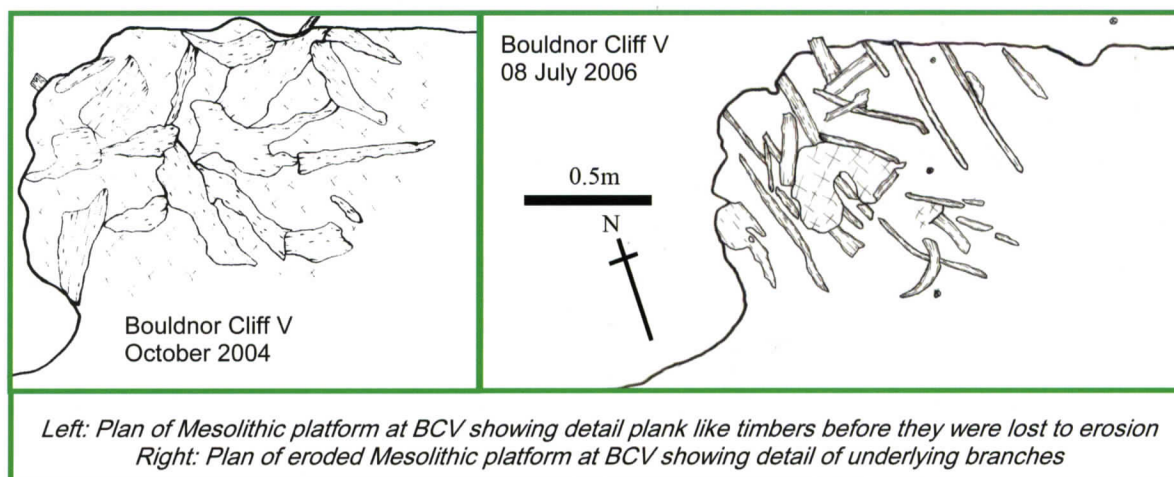
SCOPAC, Valerie Fenwick and Andy Williams, also provided support for further investigations in the western Solent. The submerged forests were inspected for new finds and the known sites were monitored. Ongoing erosion was evident off Lymington and more archaeology was being exposed as the sediments were removed from below Bouldnor Cliff. In March 2006 a second hearth was discovered in 11.5m of water. This demonstrated that the site was more substantial than originally anticipated, containing at least two hearths and a wooden platform-like structure C14 dated to 8200–7960 Cal BP (Beta-207809).



*Eroded surface of Mesolithic platform structure at BCV revealing underlying lattice of branches*

To aid interpretation of the site, the wooden 'platform' was planned, first in 2004 which revealed a structure covered in irregular shaped timbers including flat 'plank-like' pieces and then in the summer of 2006. Within the intervening eighteen month period all the large timbers had gone, below which lay a lattice of horizontal branches. In

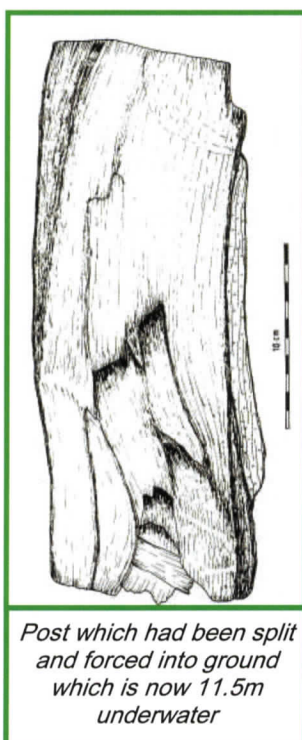




addition, the recording of monitoring points in August 2006 revealed that the site had degraded in the order of 15cm – 20cm per year.

Further investigation of the surrounding area identified a broad distribution of flint flakes and

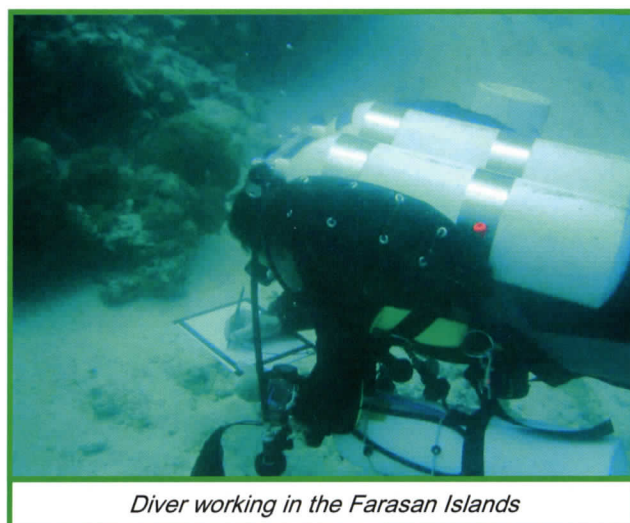
debitage embedded in the peat shelf adjacent to the platform. An anomalous timber was also found protruding from the seabed below the shelf; having been exposed after the ancient land surface had eroded from above it. This was recovered in September 2006 and initial study suggests it is the base of a post which had been split and forced into the ground, possibly to support a substantial structure.



It is becoming clear that this unique site is an extensive area of human occupation and activity. Over the last two years we have watched and recorded what we could while it disappears. Urgent action is necessary if we are to learn more about the site. We have the ambition but unfortunately not the financial resources necessary.

### EFCHED: The Global Picture

Human response to sea level change is not just a British phenomena, it is global and has had implications for human evolution and dispersal from the earliest times. Experience of investigating submerged landscapes gained by the HWTMA has been called on to assist with the EFCHED project which has been looking at the movement of people across the globe during periods of low sea level. A project, core funded by NERC, led by the University of York and supported by Saudi Aramco, Saudi Arabian Ministry of Antiquities and Museums, Shell Saudi Arabia, and SABB was conducted in the Farasan Islands in May 2006. A number of submerged landscapes were located which show potential for human occupation. It is hoped that this research can be developed to locate evidence which will help us understand the dispersal of the earliest modern humans.

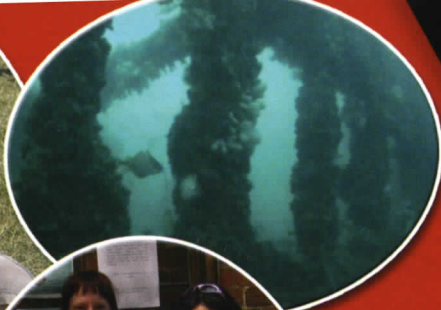




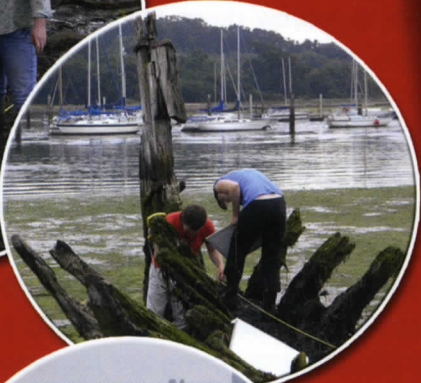
Forashore

Underwater Investigation

Activities and Events







# Education and Outreach



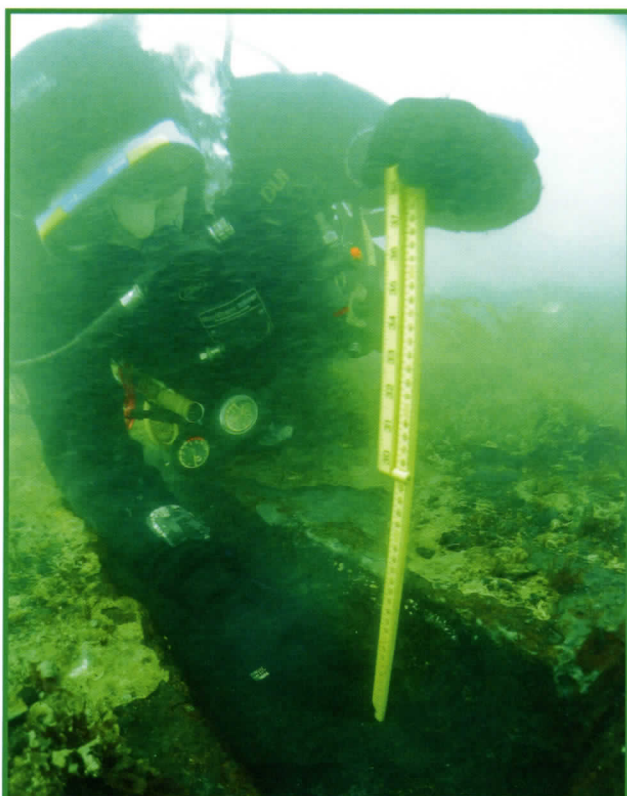
# Fieldwork

**HWTMA 2005/2006**  
[www.hwtma.org.uk](http://www.hwtma.org.uk)





Work to record historic shipwreck sites off the Hampshire coast in the eastern Solent made great progress this year. Once again a mixed team of volunteer and professional divers spent a week on a range of sites; the project was blessed with fantastic weather – making for great visibility and optimum diving conditions.



*Steve Campbell-Curtis records the area from where a cast iron ballast block was excavated*

### HMS Impregnable

On the site of HMS *Impregnable*, a 2<sup>nd</sup> rate ship of the line wrecked in 1799, a cast iron ballast bar was excavated from one of the four large mounds of concreted ballast. This aimed to answer questions relating to the shape, stacking and composition of the ballast. It was discovered that the bars were rectangular, which is different from the later examples which taper towards the top. Additionally, the remains of wooden wedges were discovered between the bars. During excavation of the concretion a small number of finds were revealed, these included two cannon balls and a worn pewter button.

Seabed monitoring measurements were also taken at established points around the site, this information is providing evidence of how sediments are moving and changing adjacent to the wreck remains. All data gathered from the site is now being brought together for publication.

### Mystery Wreck

Work to narrow down the identity of the 'mystery wreck', the remains of a substantial wooden wreck lying off Horse Tail Sands, involved survey and sampling. The wreck site consists of two sections of wooden hull which are separated by around 30 metres. Lying between the two are scattered parts of the ship such as hatch combings and knees. Divers concentrated on surveying the eastern section of wreckage before moving to the centre of the site and positioning the dispersed elements. A number of finds were recovered. These were selected if they had become uncovered and were at risk of loss or to help answer research questions. Most of the finds were copper alloy such as nails and a keel pin, another discovery was a piece of decorated copper alloy that appears to be part of a small bell.

This intriguing site has a number of features which are narrowing down the date range from which the ship originated. There are a mixture of hull fastenings including wooden tree nails, copper and yellow metal. A particularly interesting find is a carronade, situated at the western end of the site. These features, along with a number of small finds, are being analysed to help focus documentary research on recorded ship losses in the area.

### Searching For More!

Not content with two wreck sites to work on, the programme of inspecting fishermen's net snags and charted anomalies continued. Divers searched for a potentially interesting feature reported to the east of Chichester Harbour entrance, however, nothing was discovered. With a number of other wreck sites targeted for survey in the eastern Solent we look forward to gathering more data to add to knowledge of the marine cultural heritage resource in the area.



## A Truly Maritime History

This fascinating river holds a wealth of archaeological remains relating to the maritime past, the study of which is increasing our knowledge of the extent and fragility of this cultural resource. Over the past few years the Hamble River Project has grown to include a suite of initiatives which have included fieldwork, research, presentations and publications; work this year has added further elements to this.

A rapid assessment of hulks at Foulkes yard was undertaken in response to an initiative to 'clean-up' an area of the river at Bursledon on the east bank above the railway bridge. No consideration of the historic environment had been undertaken prior to this work and a wide range of vessels were at threat from loss. HWTMA staff were assisted by volunteers to gain basic photographic and measured records of vessels where it was possible. One particularly interesting vessel discovered was the remains of a First World War seaplane towing lighter, these were used for transporting seaplanes when the Admiralty began to experiment with aircraft at sea. To date only one other example of these craft has been located, which is held by the Fleet Air Arm Museum. This site demonstrates that it isn't only old wooden hulks that have historic significance, many comparatively modern vessel

remains are also important heritage assets. Further research work is required to fully assess the potential of the vessels at Foulkes Yard.

## Training and TV

Hulks on Satchell Marsh have been used as part of a training course for volunteers which aimed to develop their inter-tidal recording skills. The same sites will also feature in a TV programme to be screened later this year on ITV called 'River Walks'.

## The Way Ahead

HWTMA is delighted to have received funding for two new projects on the river. One is the Heritage Lottery Funded 'Recording Archaeological Remains on the River Hamble' which will involve local volunteers in detailed recording and research of the most significant and fragile sites in the inter-tidal zone. Another is the Crown Estate funded 'Hamble River Children's Inter-tidal Activity Booklet' which will develop a range of fun activities related to different types of sites and finds from around the river.

These new initiatives are a great boost to our work and will help with promotion of heritage locally and regionally. Look out for opportunities to help get 'stuck-in' with recording and research!



*Volunteers Emily Loughman and John Cooper survey a hulk on the Hamble River*



## Forton Lake Archaeology Project



*Volunteers Roger Forster and Charlotte Pham survey remains of hulked vessels at Forton Lake*

A new collaborative venture for 2006 is the Forton Lake Archaeology Project, which is being run in conjunction with the Nautical Archaeology Society and supported by St Vincent College. The potential of the Forton area has been highlighted over the years through the work of Ted Sutton and as part of an assessment of Portsmouth Harbour undertaken in the 1990's. Not only are there the remains of many hulked vessels, there is also a wealth of other maritime related sites such as slipways and buildings.

### Three Years

This project is programmed over three years and will include the recording of archaeological remains, researching historic documents, producing public displays and holding activity days. Fieldwork this year took place between 10 – 16 July and focused on gaining a basic record of all the sites in the inter-tidal zone, this was enhanced by detailed photographic records. The project team included volunteers of all ages, many of whom were from the local area. The week of fieldwork culminated in an official project launch and open day. We were delighted that the Mayor of Gosport was able to cut the launch cake. After this, attendees were treated to a tour of the archaeological sites around Forton

Lake guided by those who had spent the week recording them.

### Outreach and Education

In addition to the archaeological side of the project we are undertaking a large outreach initiative. Hands - on activities have been planned to engage and enthuse the local community with the wealth of maritime heritage that surrounds them. Sessions will be held to target different groups including young children, people with disabilities and families. In 2006 seven outreach days have been delivered with another seven programmed in 2007.



*The Mayor of Gosport cuts the project launch cake*



The HWTMA have been pleased to continue supporting the work of the Warship *Hazardous* Project Group who have been undertaking archaeological survey, recording and presentation on the Designated Historic Shipwreck for over twenty five years. The remains of this 4<sup>th</sup> rate ship of the line wrecked in 1706 originally began life as a French 3<sup>rd</sup> rate which was captured and refitted.

Over the past year the site has been the subject of a project funded by English Heritage to investigate the environmental conditions and predict future erosion to help with long-term management. In conjunction with the *Hazardous* Project Group a range of site survey and monitoring data has been compared to information on sediment movement, wind, wave, tide and shoreline change. The results demonstrate how erosion has significantly increased over the past twenty years, with some areas of the site losing large amounts of cultural material. The site is positioned in an interesting coastal location where sediment transport is failing to keep up with erosion; this does not bode well for future stability of the site.

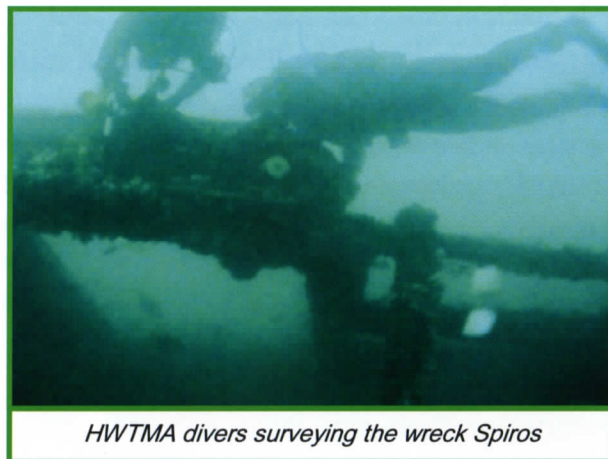
While work on the wreck is concentrating on the survey of freshly uncovered areas of structure, rescuing loose artefacts and monitoring seabed levels, work back in the office is now moving towards defining the research potential of the site. By understanding the collection of artefacts already raised, the amount of structure left on the seabed and the historical importance of the ship, it is possible to focus questions that can be asked of the archaeology on the seabed through excavation.

The establishment of a project base to enable work on the archive and artefact collection has been made possible due to a grant from Awards for All. The new base marks a significant step forward for the project team particularly as 2006 marks 300 years since the wrecking of Warship *Hazardous* in Bracklesham Bay. To mark this occasion two commemorative events are planned, with an official launch and activity day on 16<sup>th</sup> September the date that the ship set sail on it's final voyage from Chesapeake Bay, Virginia, USA and an event on the day of wrecking in November.

## Inspecting Shipwrecks

There are over 800 shipwrecks in the Sea Wight area. Many lie in close proximity and their identities can be confused. Often, visual inspection is the only way of establishing which vessel is which.

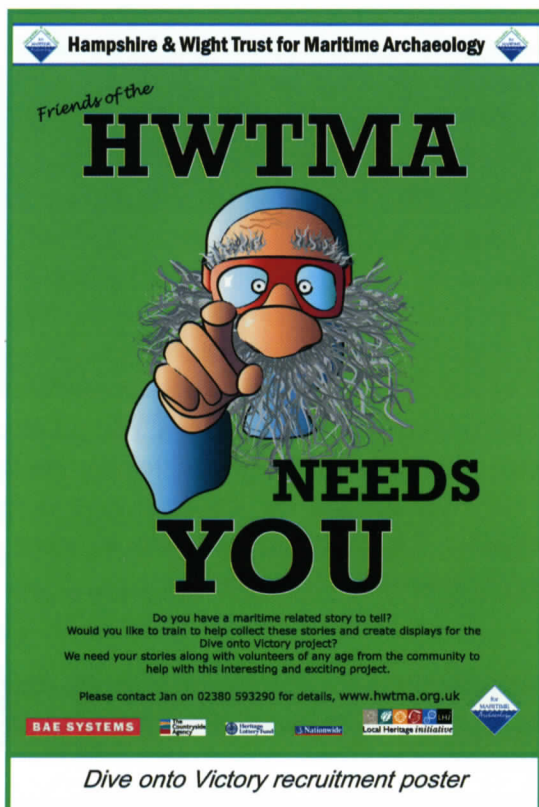
Ground-truthing and wreck verification was conducted on a number of occasions during the summer fieldwork season. Three wreck sites were inspected from Dave Wendes's boat, *Wight Spirit*. The first was a wreck about 100 years old believed to be either the *Clyde*, the *Spiros* or the *Reindeer*. Research by Mr Wendes had uncovered the dimensions and cargo of each vessel. HWTMA divers visited the wreck site and collected salient measurements proving it to be the *Spiros*, a steam ship built 1880 which sank in 1920. The *Joannis Millas*, lost in 1895 was also inspected on the same day. The site is in shallower water and broken up



but still discernable as a ship wreck. The *Gladiator* was the third site visited. Lost off Sconce Point in 1908, all that could be located on the seabed was a watertight hatch and several concretions protruding from the sand.



The popular 'Dive on to *Victory*' project has been highly successful in the last year. Friends of HWTMA, volunteers and members of the community have acquired many new skills and a number of people have grasped the opportunity to become part of this project funded by the Local Heritage Initiative.



### Project Launch

The project was launched last year to coincide with the year of *Sea Britain* and the celebrations to mark the 200<sup>th</sup> anniversary of victory at the battle of Trafalgar. HMS *Victory* was chosen as the figurehead around which to centre the project as the ship is one of the most enduring symbols of Britain's maritime past.

### Underwater Exploring

The successful diving on HMS *Victory*'s old mooring site in 2005 (where the ship was moored until 1922) prompted a further dive in April of 2006. Once again WIGHTlink donated one of their boats and working with HWTMA staff, five volunteer divers learnt underwater survey and recording skills. Two

brave members of the community learnt how to log the interesting finds as they were lifted to the surface - along with the smell! - from their watery grave. These artefacts can give us an insight into the lives of those who earned their living on the sea. Amongst the oldest items discovered were a button polisher, a shoe buckle, dozens of clay pipe bowls and hundreds of pipe stems which demonstrate the once very popular pastime of tobacco smoking.

### Scurvy Cure?

The numerous 19<sup>th</sup> century marmalade jars discovered led to questions over the possibility that marmalade may have been taken to sea as a protection against scurvy due to its longevity on long passages. It is known that Captain Cook took carrot marmalade to sea to try to prevent scurvy in the mid 1700s. He was certainly on the right track but it did not contain the ascorbic acid necessary for the cure and it was not until 1795 that scurvy was eliminated from the fleet. Despite this it was only in 1856 that the British board of trade formed a policy of using vitamin C to eliminate scurvy in the trading fleet delaying its prevention by 260 years since the first experiments with ascorbic acid began!

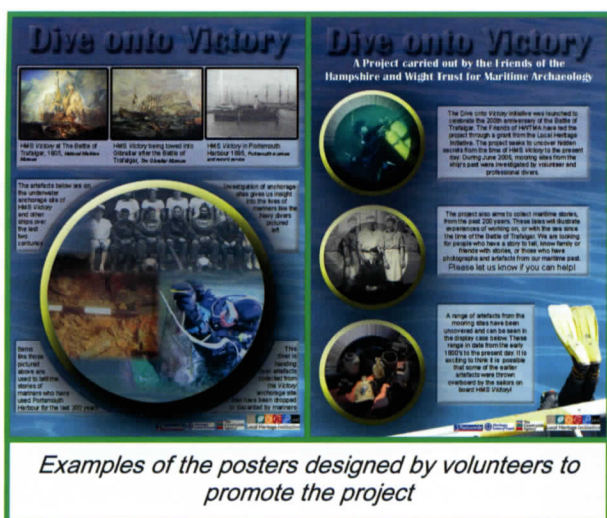


Volunteers Pauline Christie and George Cuthbert help to record artefacts as they are raised

### Workshops and Training

The skills workshops organised as part of the project proved popular and some impressive posters were produced by those who learnt the art of design.





The results are now part of a travelling display which has been exhibited in Hurst Castle, Gosport Discovery Centre, Southsea Castle and there is also a long-term display in Eastleigh Museum. The oral history collecting workshops were great fun with each volunteer practicing interviewing each other. The volunteers then went on to interview members of the public recording their maritime related memories. These are to be incorporated into an education resource pack.

## Activity Days

Activities were conducted to promote the project at the open day at the National Oceanography Centre (NOC) during National Science week in March. Project posters were set up and eight small boxes of play sand were created with some small artefacts from the *Victory* mooring site hidden inside. The children then had to carefully excavate the sand with small trowels to uncover the hidden artefacts; those that were old enough could act as a maritime archaeologist and log their finds on sheets of paper. The day attracted two and half thousand visitors, and this activity proved highly popular helping to promote interest in the project from both children and adults.

Work has begun on producing an education resource pack which will be available to schools on CD. This will be an invaluable resource drawing on the oral histories and research carried out during the project. Exhibitions of the artefacts alongside poster displays will continue to be displayed at various venues and shows around Hampshire and the Isle of Wight.

## Friends of HWTMA

A push to generate new Friends membership has been addressed by a redesign of the bulletin, the creation of initiatives to encourage more active involvement in Trust events and the provision of enjoyable opportunities designed for Friends. This year there have been more activities and events for Friends than ever before. From fieldwork, to talks, to trips and events there has been plenty to get involved in. The number of Friends of the Trust is at its highest ever and still rising. . . a trend we hope to continue into next year!

Trips included a visit to the National Maritime Museum and Cutty Sark and a trip to Buckler's Hard complete with River Cruise and a guided tour by Dr Jon Adams. The demand for the Buckler's Hard trip was so great that a second was organised, and

filled, a month later. Fieldwork opportunities have included a series of intertidal fieldwork days on the River Hamble and at Forton Lake.



*Friends enjoy a tour of Buckler's Hard by Dr Jon Adams*



### Sword Sands, Langstone Harbour

The HWTMA was asked by Hampshire County Council to undertake a site investigation at Sword Sands, following the recovery of human remains from the area. Paul Ribbington from the Portsmouth Outdoor Centre made the initial discoveries on the sandbank and he accompanied members of the HWTMA who visited the site to conduct a survey.



*HWTMA archaeologist Julian Jansen Van Rensburg and Paul Ribbington investigate a find*

Fieldwalking was undertaken during low water when Sword Sands was uncovered. The finds made were photographed, drawn and their position marked with a GPS. During the survey several artefacts were recorded including an old boot which may have come from the paddle tug, *Irishman* which sank at Sword Point on May 8th 1941. Alongside the more recent artefacts a possible prehistoric tree stump was located. This is of particular interest as similar finds were made during the Langstone Harbour Archaeological Survey Project. Radiocarbon dating of these stumps dated them to the Neolithic, it is likely that the tree stump found this also dates from this period.

### Solent and Wight Seascapes Project

HWTMA, together with Bournemouth University and Southampton University, have been commissioned by English Heritage to complete a marine Historic Landscape Characterisation of the inter-tidal and offshore zone of an approximate 150 mile stretch of the southern coastline from Purbeck to Selsey Bill. Funded by the Aggregates Levy Sustainability Fund (ALSF), it is one of four Seascapes Pilot Projects being carried out simultaneously at different coastal locations. The project applies the principles of Historic Landscape Characterisation (HLC), now

well established in the terrestrial zone, to the inter-tidal and marine environment. HLC is a way of describing and displaying the physical, environmental and human changes that have made the landscape appear as it does today. It can be used as a heritage management tool, ensuring any impacts on, or adaptations to the landscape are appropriate to its historic character. It provides a broader understanding of the heritage of an area by including every part of the landscape rather than focusing on individual sites and monuments.

Marine HLC involves mapping and evaluating the diverse range of evidence for human activity in the inter-tidal and marine zones. This includes examples such as; prehistoric occupation sites submerged over time by rising sea level, shipwrecks, shipping routes, industrial structures and processing areas, dredging, fishing, recreation areas and debris lying on the seabed. The project involves building a GIS model with an attached database to be used as a tool to inform the long-term management of the marine historic environment. Marine HLC will help facilitate an integrated approach to spatial planning in the future.

### The Itchen River Project

The Itchen River project has now been continuing for almost ten years. Most of the fieldwork was conducted towards the end of the 1990s but changes are still being monitored. Research is uncovering more information about its significance but often understated past, and a photographic record of recent changes is being compared with the archive collected a decade ago.

### The Medina River survey

The Medina River has been an artery into the heart of the Isle of Wight for many centuries. As such it has a heritage that is intrinsically linked to the history of the Isle of Wight. In 2006, the HWTMA were commissioned by the Isle of Wight County Archaeology Service to conduct a maritime geophysical survey along the river to help define its archaeological potential. The survey has been completed and is currently being processed.



## Professor Archie O' Logy

Following his dramatic unveiling at the 2005 AGM, Professor Archie O'Logy has had a very busy year. Since being able to stand independently on a good sturdy pair of fins, he really has not sat down to rest! He has become established as a well known face of the Trust and has many new friends. The Professor's year has seen many projects and lots of schmoozing amongst archaeological high fliers and celebs.



*Archie O'Logy and celebrity Phil Harding and being interviewed on TV at the Dive Show!*

## Where's the Prof?

He's been seen flirting with 'Dive-Girl', lecturing at the London International Dive Show, and giving archaeological tips to Phil Harding from Time Team. He has worked with the NAS in their Stourhead Landscape Project, and is frequently seen trying to 'reach out' to the public through his various 'outreach' initiatives.

## Employee of the Year Award!

The Professor has made regular appearances at activity days on the Isle of Wight and has even been asked to write an article about being a maritime archaeologist for the YAC (Young Archaeology Club) magazine. Archie has become a valued and much loved friend, colleague, icon and idol of the Trust. He has certainly proved himself this year and is hoping to take over as Director in the not so far off future!

## Dive into History

Two new exciting educational resources have been released by HWTMA this year for children. First and foremost is the Dive into History Activity Book, aimed at children between 5 and 11 years old, it seeks to inspire children and motivate them to learn more about underwater archaeology. It is fully interactive with tasks to challenge children and make them think about heritage. Puzzles, games and activities stimulate learning and handy fact boxes fascinate young readers. Key words throughout aim to build vocabulary and to improve literacy. Dive into History has been extremely well received and is a popular seller at the Underwater Archaeology Centre.

Secondly, we have released Professor Archie O'Logy's Interactive Fun Zone CD which was originally developed for use on the touch screen computers in the exhibition at the Underwater Archaeology Centre. However they were so popular that HWTMA decided to make them available for the public to use at home. The CD is split into three main chapters, largely based around the content of the Secrets of the Solent Education Pack: What is Maritime Archaeology, Shipwrecks and Submerged Landscapes. Flash animations, image galleries and quizzes allow the user to explore the world of maritime archaeology encouraging an active search for information from within the resource.



*Children at the UAC enjoy the new interactive Fun Zone CD*



### Annual Public Lecture

As a fitting topic during the bi-centenary of the battle of Trafalgar and the year of Sea Britain, the annual public lecture was given by Peter Goodwin, curator of HMS *Victory*. Peter enthralled the audience with his topic 'The Ships of Trafalgar' which included ship design of the British, French and Spanish fleets contrasting their differences and similarities. He outlined the amount of guns they carried and compared contemporary drawings of the day by marine artist John Livesay (who sketched the ships when they were in harbour), with the original ships drawings which proved intriguing. The presentation contained many magnificent images of famous paintings of the fighting ships in battle which were a joy to view, before Peter finally went on to describe fascinating facts regarding the amounts of timber necessary to build one of these ships with masts and spars; the amount of rope, sail cloth, blocks and other items needed to ensure the serviceability of the ships during the long voyages and unforeseen time spent at sea during both during peace time, and when engaging the enemy in battle. A pleasurable evening was had by all, many of whom enjoyed mince pies and a glass of mulled wine prior to, or following the lecture.

### Website

The HWTMA's website has once again improved, resulting in a substantial increase in people visiting. In the last year alone we have had over 250,000 hits - this is an average of nearly 700 a day. The site is regularly updated with news, project results, information and many outreach events hosted by the Trust. The site has been enhanced with additional video clips and a range of interesting activities and downloads available.

The website has proved to be an important tool in disseminating the Trust's work enabling access by a worldwide audience. The website provides an excellent showcase for our work and publicises information about projects and research activities. The substantial increase in the number of visitors to the site can be attributed in part to the new

education pages which contain a wealth of information for schools and children to download. As well as a new interactive zone with children's puzzles, colouring in and a whole range of other interactive activities. In the last year alone 1022 copies of the Secrets of the Solent education pack have been downloaded. The newly launched education pack, Exploring the Seabed of the Solent and Wight, has already seen 151 copies downloaded since its launch!

### Winter Lecture Series

The first collaborative winter lecture series between HWTMA and Brading Roman Villa was a sell-out. As all five lectures were sold out a sixth was added due to demand. A second lecture series has been organised for this winter. For more information please email: [info@hwtma.org.uk](mailto:info@hwtma.org.uk)

### London International Dive Show

HWTMA attended LIDS 2006 with a stand to promote HWTMA. Professor Archie O'Logy made his first appearance at the show where he caused much delight but constantly faced the risk of kidnap!

### Southampton Boat Show

HWTMA had a charity stand at Southampton Boat Show. The stand helped raise the profile of HWTMA within the boating community and highlighted the importance of the maritime heritage they routinely sail over! Feedback was extremely positive and HWTMA hope to have enticed a few new Friends.



Southampton Boat Show 2006



## Work Experience

HWTMA continue to provide valuable experience to those who want to take their archaeological interest a step further. Volunteers are an important asset to HWTMA as they support us in achieving our charitable aims. We would like to thank Francesco Caputo, Emily Loughman and Robert Hamilton for their hard work during their placements.

## Articles, Reports, Publications and Publicity

- ♦ Annual Report
- ♦ Archaeology and Coastal Change Project Report
- ♦ Dive into History Activity Book
- ♦ Exploring the Seabed of the Solent and Wight: Maritime Archaeology and Marine Aggregate Resource Pack
- ♦ Quantifying the Hazardous Threat: An assessment of site monitoring data and environmental data sets
- ♦ Assessment of vessels near Riverside Boat Yard, River Hamble, Hampshire
- ♦ Sword Sands Survey
- ♦ BBC Radio Solent
- ♦ CBA Wessex Newsletter
- ♦ Current Archaeology
- ♦ Isle of Wight County Press
- ♦ Isle of Wight Beacon
- ♦ Primary Times
- ♦ Southampton Daily Echo
- ♦ Times Educational Supplement
- ♦ Underwater Technology

Papers given at events and conferences include IFA MAG Archaeological Diving Practices, Seminar, ALSF Outreach Seminar, ALSF Projects Seminar, Hampshire County Council Coastal Managers Seminar, CBA Wessex Regional Seminar, City of Southampton Prehistoric Solent Conference, NAS Flint Knapping Seminar, SUT Diving for Science and Archaeology Conference, AFRACMAR Working Group and Orkney Science Festival.

HWTMA are represented at meetings of the Standing Conference on Problems Associated with the Coastline, the Solent Forum, the Institute of Field Archaeologists Maritime Affairs Group, the Joint Nautical Archaeology Policy Committee, IKUWA 3 Steering Committee, the Executive Committee of the Nautical Archaeology Society, the Solent European Marine Sites Strategic Advisory Group, the Council for British Archaeology Wessex Region Committee, Society of Underwater Technology Diving and Manned Submersibles and Underwater Science Group Committees, the Scientific Diving Supervisory Committee, Chichester Harbour SUPA Committee, Poole Harbour Heritage Project, the Hamble Harbour Advisory Committee, the Hamble Estuary Management Plan Implementation Forum and the River Hamble Education Group, the Isle of Wight Heritage Partnership and the Southampton Heritage Federation.

## Talks, Lectures and Representation

Over the last year members of HWTMA have given presentations to over 2,000 people. This can be broken down in to the following groups:

2005—2006 Summary of Talks, Lectures and Presentations	
Schools and Youth Groups	23
Archaeological and Historical Societies	14
Community Groups	34
Higher and Further Education Groups	6

2005—2006 Summary of Activities	
Visitors to Underwater Archaeology Centre	9581
Number of people attending summer activity events	6550
Number of people requesting an educational resource	1517
Divers on the Alum Bay Dive Trail	63
Number of exhibitions with HWTMA travelling display	34
Number of people accessing the website	250,000+
Number of days diving	35



## Thank you!

HWTMA gratefully acknowledges the generous support of the following:

October 2005 — September 2006

### Grants and Donations

Hampshire County Council	Valerie Fenwick
Isle of Wight Council	Godwins Solicitors
Southampton City Council	Michael Aitken
West Sussex County Council	David Guy
English Heritage	Herapath Shenton
Crown Estate	Manifold Trust
English Nature	D'Oyle Carte Trust
Isle of Wight Economic Partnership Leader + Programme	British American Tobacco
Local Heritage Initiative	Roger Brookes Charitable Trust
WIGHT/link	A & P Group
Your Heritage—Heritage Lottery Fund	Mitchell Power Systems
Project AWARE Foundation (International)	A. Goddard
BSAC Jubilee Trust	S. Cox
Gosling Foundation	Gale and Company
John Coates Charitable Trust	Ernst and Young
Daisie Rich Charitable Trust	

### Assistance in Kind and Services

Apex	Go Dive	Mr D Pascoe
Analytical Engineering Ltd	Mr P Guymer	Mr D Reddington
Mrs D Backhouse-Fry	Hampshire County Council	Mr D Riordan
BAE Systems	Hampshire Wildlife Trust	Mrs R Robbins
Mr R Barclay	Hamble Harbour Authority	Royal Yacht Squadron
Mr J and Mrs J Bingeman	Mr and Mrs Hamer	Mr P Silvester
Mr N Blake	Hanson Marine Aggregates	Mr P Simpson
Mr P Blake	Hurst Castle Services	Dr R Scaife
Mr A Bradbury	Isle of Wight Council	Mr B Sparks
British Ocean Sediment Core Research	Mr M James	Mr G Stone
Facility	Dr D Johnston	Dr D Tomlin
Mr S Campbell-Curtis	Mary Rose Trust	University of Southampton
Channel Coastal Observatory	Mr A Mack	Mrs J Verrinder
Dr K Collins	Dr D McElvogue	Virgin Active
Mr G Cuthbert	Mrs D Morgan	Mr D Wendes, Wight Spirit Charters
Derventio	Mrs M Morphy	Mr A Williams
Miss S Exelby	Mr A Moss	Mrs W Wiseman
Mr M Flint	National Oceanography Centre	Mr M Woodward
Mr R Flint	Opto International	Yarmouth Harbour Master

And a big thank you to all our volunteers whose help and support have enabled us to achieve the project results that have been outlined in this report.

Company Limited by Guarantee  
Registered in England—Number 2394244  
Registered Office—County Hall, Newport, Isle of Wight  
Charity Registration Number 900025  
Bankers: Lloyds TSB Bank Pl, 49 High Street, Winchester  
Auditors: Harrison Black, Pyle House, 136 & 137 Pyle Street, Newport, Isle of Wight





Hampshire  
County Council



Supported by  
**The National Lottery**<sup>®</sup>  
through the Heritage Lottery Fund



Heritage  
Lottery Fund



ENGLISH HERITAGE



Local Heritage *initiative*



Heritage  
Lottery Fund



Nationwide



The  
Countryside  
Agency



THE CROWN  
ESTATE



**SCOPAC**

STANDING CONFERENCE  
ON PROBLEMS ASSOCIATED  
WITH THE COASTLINE



**BAE SYSTEMS**

Supported through the DEFRA Aggregates Levy Sustainability Fund



The Annual Report is a summary of the work of the Hampshire and Wight Trust for Maritime Archaeology. HWTMA promotes interest, research and knowledge of maritime archaeology and heritage in Great Britain, concentrating its efforts in Hampshire and the Isle of Wight.

Our fifteenth year of presenting activities and seminars has been the busiest yet with a programme reaching out to members of the public, community groups and schools. 77 presentations have been given, 16 reports, books and papers have been published, 23 activity days have been organised, over 1500 education packs have been requested by schools around the country and our web site has attracted over 250,000 'hits'.



## **Hampshire and Wight Trust for Maritime Archaeology**

Room W1/95

National Oceanography Centre,  
Empress Dock, Southampton  
Hampshire SO14 3ZH

Telephone: 023 8059 3290

Fax: 023 8059 3052

email: [info@hwtma.org.uk](mailto:info@hwtma.org.uk)

website: [www.hwtma.org.uk](http://www.hwtma.org.uk)

Registered Charity Number: 900025