

HOW TO FIND US

All volunteering, unless otherwise specified, takes place at the MAT's Queens Terrace Office:

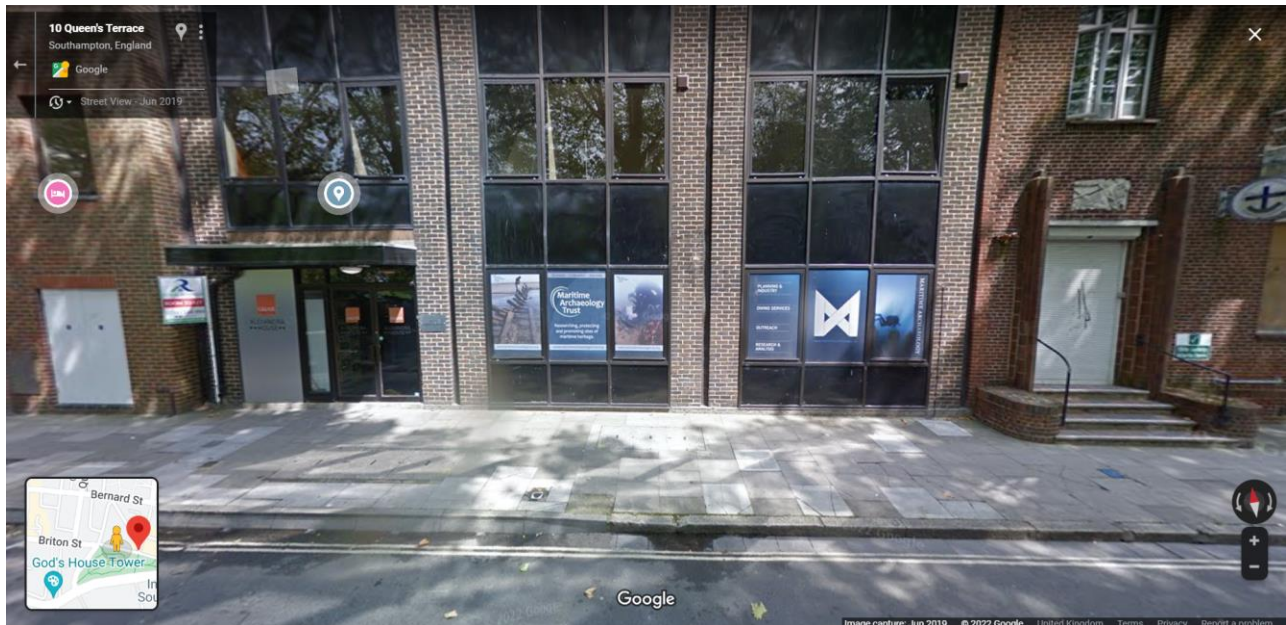
Maritime Archaeology Trust,

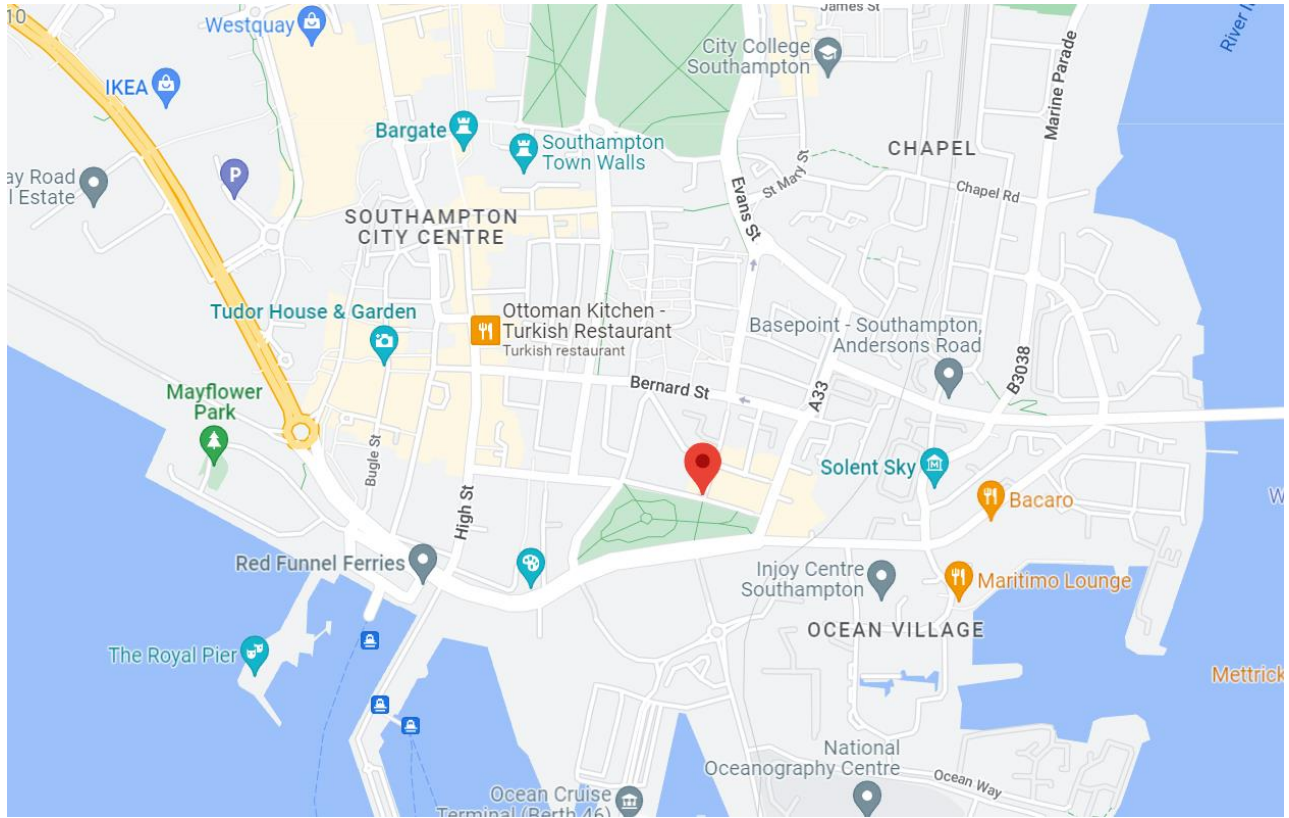
10-11 Queens Terrace,

Southampton,

SO17 3BP

There is no buzzer system in the building, so please knock on the windows or ring the office on 02380 237 300.





The Queens Terrace office is a 25 minute walk from Southampton Central rail station, and is well-serviced by local buses (see <https://myjourneysouthampton.com/> for bus details).

Parking is available in the area – on Queens Terrace, this is limited to 4 hours, but on the surrounding roads (e.g. Orchard Place and Brunswick Square) parking is all day.